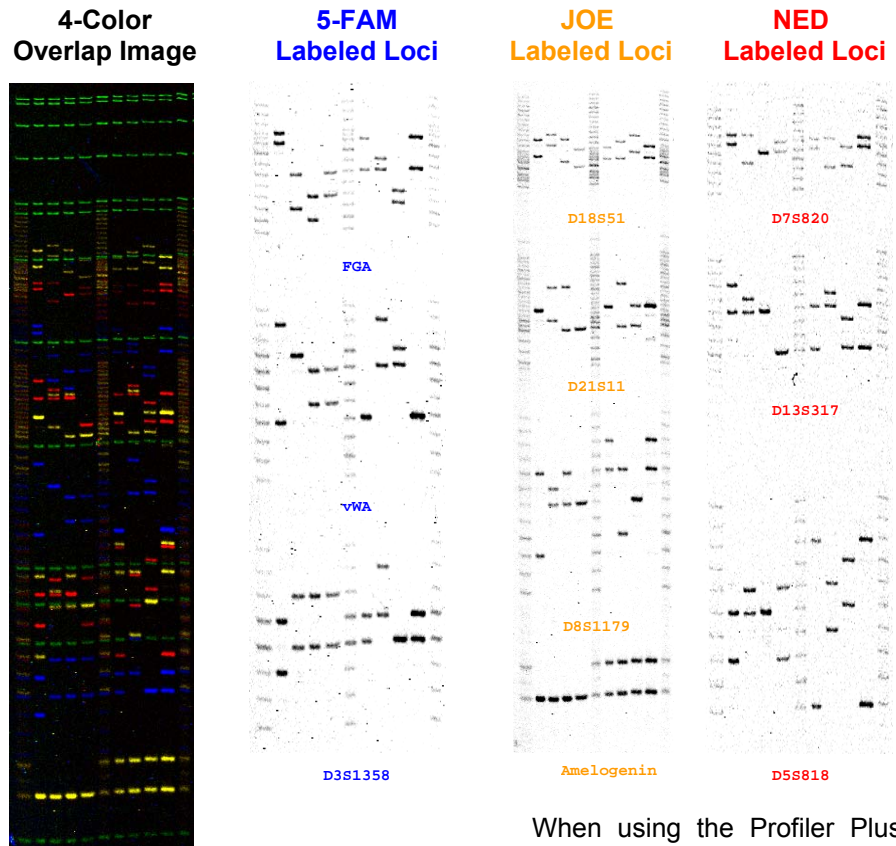


Applied Biosystems' AmpFLSTR® Profiler Plus™ Kit

These gel images, run on an FMBIO® III Plus Imaging System, show the 10 different loci (9 STR loci and Amelogenin) generated from Applied Biosystems' AmpFLSTR® Profiler Plus™ Kit for human identification applications. The 10 different loci are D3S1358, D5S818, D7S820, D8S1179, D13S317, D18S51, D21S11, FGA, vWA, and Amelogenin.

Profiler Plus™ amplified samples and Allelic Ladders were kindly provided by the Department Of Justice in Berkeley, CA. Loading solutions of 1 uL of samples or ladders were mixed with 0.2 uL 500 ROX Standards and 1.8 uL Bromophenol Blue solution. These were then denatured at 95 °C for 2 minutes. Approximately 1.5 uL was loaded onto a 6% GenePAGE PLUS gel and run 1 hr and 40 min. on a SA47 Gel apparatus before scanning on the FMBIO® III Plus Imaging System.



When using the Profiler Plus™ Kit with the FMBIO® III Plus Imaging systems, Table 1 depicts the individual settings for each locus and dye combination used with this system. The gel was scanned in 3 repeats at a 100 um resolution to improve signal quality. The 4-color overlap image shows the power and convenience of MiraiBio Image Analysis software.

These images definitively show that Applied BioSystems AmpFLSTR® Profiler Plus™ kit can be effectively used in combination with MiraiBio's FMBIO® III Imaging systems.

Table 1: FMBIO III Plus Parameters

	Loci	Dye	Filter	Laser	PMT
Channel 1	D7S820, D13S317, D5S818	NED	580 nm	532 nm	100%
Channel 2*	GeneScan 500 Std.	ROX	650 nm	532 nm	100%
Channel 3	FGA, vWA, D3S1358	5-FAM	520 nm	488 nm	100%
Channel 4	D18S51, D21S11, D8S1179, Amelogenin	JOE	555 nm	532 nm	100%

* The GeneScan 500 standards' image is not shown.