

HITACHI

Inspire the Next

MasterPlex®: Make Your Discovery

MasterPlex AssayCheX Plug-in

Radix BioSolutions and Hitachi Software have partnered to offer a robust solution that delivers fast validated results.

AssayCheX Plug-in

MasterPlex is the only Luminex®/BioPlex® xMAP® data analysis software solution that allows you to seamlessly integrate the AssayCheX Process Controls into your data analysis workflow.

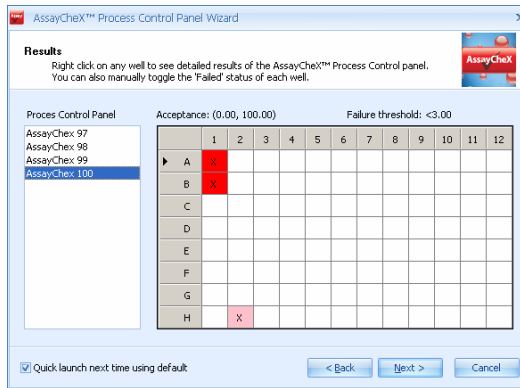
Add the AssayCheX plug-in to MasterPlex QT and Stop Guessing!

How does it work?

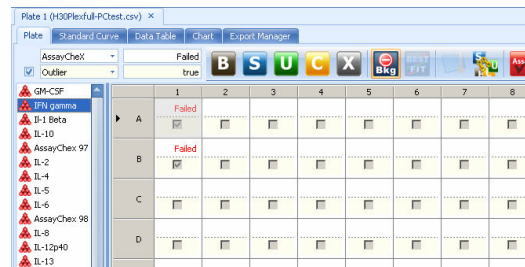
User defined thresholds are checked for each AssayCheX Process Control microsphere region in **every well**.

Failed wells can be flagged for review or automatically marked as global outliers. Any failed wells will be excluded from further calculations.

The results are displayed in the MasterPlex Plate view and Data table and a final report is automatically generated.



Bead	Result	MFI	Acceptance	Fail Threshold
AssayCheX 97	Passed	997.00	(798.43, 1197.65)	< 300.00
AssayCheX 98	Warning	3000.00	(3982.92, 5974.38)	< 300.00
AssayCheX 99	Passed	250.00	(200.00, 300.00)	< 200.00
AssayCheX 100	Passed	16.00	(0.00, 100.00)	< 3.00



AssayCheX™ Report

Result Plate Map:

	1	2	3	4	5	6	7	8	9	10	11	12
A	Failed											
B												
C												
D												
E												
F												
G												
H												

Detailed Results:

Well	AssayCheX 97 (798.43 / 1197.65) < 300.00	AssayCheX 98 (3982.92 / 5974.38) < 300.00	AssayCheX 99 (200.00 / 300.00) < 200.00	AssayCheX 100 (0.00 / 100.00) < 3.00
A1	1000.00	5060.00	250.00	1.00
B1	1001.00	5020.00	250.00	2.00
H2	997.00	3000.00	250.00	16.00

About AssayCheX

Stop questioning your results. Start believing in your data – with AssayCheX from Radix BioSolutions. A simple-to-use panel of control beads for immunoassays using xMAP Technology, AssayCheX examines every well separately to ensure the results integrity of every sample

- Verify individual data points
- Confirm assay performance
- Useful for troubleshooting
- Instantly flag potential failures
- Reduce the need for duplicates

Add AssayCheX.

Add confidence to your results.

About MasterPlex

Software is the interface to your experimental results and, more than anything else, sets different instrument systems apart.

Hitachi Software is the only software company focused on the xMAP platform.

MasterPlex protects your investment in an xMAP instrument beyond your current assay needs. It is regularly updated to support a growing variety of application areas, including chemokine cytokine quantitation, regression analysis, and miRNA and gene expression profiling.



Call 800-624-6176 To Order
 601 Gateway Blvd, Suite 100 | South San Francisco | CA | 94080
 Tel: 800-624-6176 | Fax: 650-615-7639 | www.miraibio.com

